

DIRC, the Internally Reflecting Ring Imaging Cherenkov Detector for BABAR¹

I. Adam,^a R. Aleksan,^b D. Aston,^a P. Bailly,^c C. Beigbeder,^d M. Benayoun,^c M. Benkebil,^d G. Bonneaud,^e D. Breton,^d H. Briand,^c D. Brown,^f Ph. Bourgeois,^b J. Chauveau,^c R. Cizeron,^d J. Cohen-Tanugi,^a M. Convery,^a P. David,^c C. de la Vaissiere,^c A. de Lesquen,^b L. del Buono,^c G. Fouque,^e A. Gaidot,^b F. Gastaldi,^e J.-F. Genat,^c L. Gosset,^b D. Hale,^g G. Hamel de Monchenault,^{b,f} O. Hamon,^c R. Kadel^f J. Kadyk,^f M. Karolak,^b H. Kawahara,^a H. Krueger,^a H. Lebbolo,^c P.H. Leruste,^c F. Le Diberder,^c G. London,^b M. Long,^f J. Lory,^{c,†} A. Lu,^g A.-M. Lutz,^d G. Lynch,^f M. McCulloch,^a D. McShurley,^a R. Malchow,^h P. Matricon,^e B. Mayer,^b B. Meadows,ⁱ J.-L. Narjoux,^c J.-M. Noppe,^d D. Oshatz,^f G. Oxoby,^a R. Plano,^j S. Plaszczynski,^d M. Pripstein,^f J. Rasson,^f B. Ratcliff,^a R. Reif,^a C. Renard,^e L. Roos,^c E. Roussot,^e X. Sarazin,^a M.-H. Schune,^d J. Schwiening,^{a,2} S. Sen,^d V. Shelkov,^f M. Sokoloff,ⁱ H. Staengle,^h P. Stiles,^a R. Stone,^f Ch. Thiebaut,^e K. Truong,^d W. Toki,^h G. Vasileiadis,^e G. Vasseur,^b J. Va'vra,^a M. Verderi,^e S. Versille,^c D. Warner,^h T. Weber,^a T. F. Weber,^f W. Wenzel,^f R. Wilson,^h G. Wormser,^d Ch. Yéche,^b S. Yellin,^g B. Zhang,^{c,‡} M. Zito.^b

^aStanford Linear Accelerator Center, Stanford, CA 94309, USA. ^bCEA, DAPNIA, CE-Saclay, F-91191, Gif-sur-Yvette Cedex, France. ^cLPNHE des Universités Paris 6 et Paris 7, Tour 33, Bc 200, 4 Place Jussieu, F-75252, Paris, Cedex 05, France. ^dLAL Orsay, Université Paris Sud, Batiment 200, F-91405 Orsay Cedex, France. ^eLPNHE de l'École Polytechnique, Route de Saclay, F-91128 Palaiseau Cedex, France. ^fLawrence Berkeley National Laboratory, One Cyclotron Road, Berkeley, CA 94720, USA. ^gDept. of Physics, University of California, Santa Barbara, CA 93106, USA. ^hDept. of Physics, Colorado State University, Fort Collins, CO 80523, USA. ⁱDept. of Physics, University of Cincinnati, Cincinnati, OH 45221, USA. ^jDept. of Physics, Rutgers University, P.O. Box 849, Piscataway, NJ 08855, USA. [†]Retired. [‡]Permanent address: Inst. of High Energy Physics, Chinese Academy of Sciences; P.O. Box 918, Beijing 100039, The People's Republic of China.

Abstract

The DIRC is a new type of Cherenkov imaging device that will be used for the first time in the BABAR detector at the asymmetric B-factory, PEP-II. It is based on total internal reflection and uses long, rectangular bars made from synthetic fused silica as Cherenkov radiator and light guide. The principles of the DIRC ring imaging Cherenkov technique are explained and results from the prototype program are presented. Its choice for the BABAR detector particle identification system is motivated, followed by a discussion of the quartz radiator properties and the detector design.

I. INTRODUCTION

PEP-II is an asymmetric e^+e^- collider, with beam energies of 9 GeV electrons upon 3.1 GeV positrons [1]. At the design luminosity of $10^{34} \text{ cm}^{-2}\text{s}^{-1}$, the production of $\Upsilon(4S)$ with a boost of $\beta\gamma = 0.56$ will result in about 10 $B\bar{B}$ pairs per second. BABAR is the detector dedicated to studying the collisions at

PEP-II, with a primary physics goal of observing CP violation in the $B^0\bar{B}^0$ system [2]. The experiment is expected to begin taking data in the spring of 1999.

In the study of CP violation, precise particle identification (PID) of charged pions and kaons over the full kinematic range is of particular importance, both to reconstruct one of the two B mesons in an exclusive decay mode, and to "tag" the beauty content of the recoiling B meson (identify it as either a B^0 or a \bar{B}^0 when it decayed). The BABAR drift chamber can perform π^\pm/K^\pm separation with at least 3 σ significance up to 700 MeV/c by measuring the specific energy loss. Since the B-decays are boosted at PEP-II in the forward (electron) direction, the maximum momentum particle possible in a two-body B-decay is about 1.5 GeV/c in the backward direction and about 4 GeV/c in the forward direction. A dedicated PID system should cover the range from 0.7 up to 4 GeV/c and take the asymmetry of the boosted events into account. Since the PID system is surrounded by a CsI crystal calorimeter, it should also be thin in both radial dimension (to minimize the amount of CsI material needed) and radiation length (to avoid the deterioration of the excellent energy resolution of the calorimeter). Finally, to operate successfully in the high-luminosity environment of PEP-II, the detector should be fast and tolerant of background.

¹Work supported by Department of Energy contract DE-AC03-76SF00515.

²Speaker and contact: Jochen Schwiening, Stanford Linear Accelerator Center, Stanford, CA 94309, USA.

Invited talk presented at the 1997 IEEE Nuclear Science Symposium and Medical Imaging Conference, Albuquerque, New Mexico, USA, November 9-15 1997

II. THE DIRC CONCEPT

The DIRC is a new type of Cherenkov ring imaging detector which utilizes totally internally reflecting Cherenkov photons in the visible and near UV range [3]. The acronym DIRC stands for **D**etection of **I**nternally **R**elected Čerenkov light.

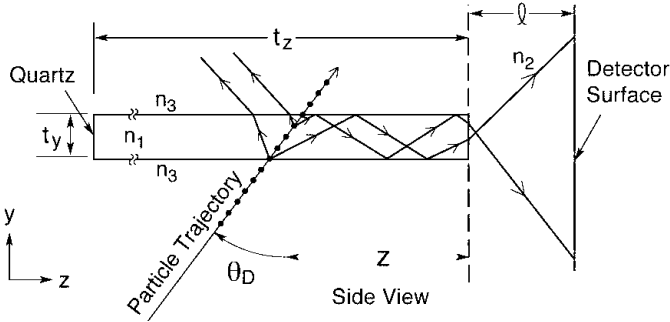


Fig. 1 Imaging principle of the DIRC.

The geometry of the DIRC is shown schematically in Figure 1. It uses long, thin, flat quartz radiator bars (effective mean refractive index $n_1 = 1.474$) with a rectangular cross section. The quartz bar is surrounded by a material with a small refractive index $n_3 \sim 1$ (nitrogen in this case). As it traverses the quartz bar, a particle of velocity $\beta = \frac{v}{c} \geq 1/n_1$ will radiate Cherenkov photons in a cone of half opening angle θ_c around the particle trajectory. Since the refractive index of the radiator bar n_1 is large, some of the Cherenkov photons will be totally internally reflected, regardless of the incidence angle of the tracks, and propagate along the length of the bar. To avoid having to instrument both bar ends with photon detectors, a mirror is placed at one end, perpendicular to the bar axis. This mirror returns most of the incident photons to the other (instrumented) bar end. Since the bar has a rectangular cross section and is made to optical precision, the direction of the photons remains unchanged and the Cherenkov angle conserved during the transport, except for left-right/up-down ambiguities due to the reflection at the radiator bar surfaces. The photons are then proximity focused by expanding through a standoff region filled with purified water (index $n_2 \sim 1.34$) onto an array of densely packed photomultiplier tubes placed at a distance of about 1.2 m from the bar end, where the Cherenkov angle is measured from the radius of the Cherenkov ring, determining the particle velocity. Combined with the momentum information from the drift chamber, the mass of the particle is identified.

III. THE DIRC PROTOTYPE PROGRAM

The topics described here were selected to highlight the performance of the DIRC prototypes. Details of the setup, data analysis, and results can be found in Ref. [4] for Prototype I and in Ref. [5] for Prototype II.

A. Prototype I

Prototype I was a conceptual prototype that operated from 1993–1994 in a hardened cosmic muons setup at SLAC [4]. It provided a proof-of-principle and the basis for the detector

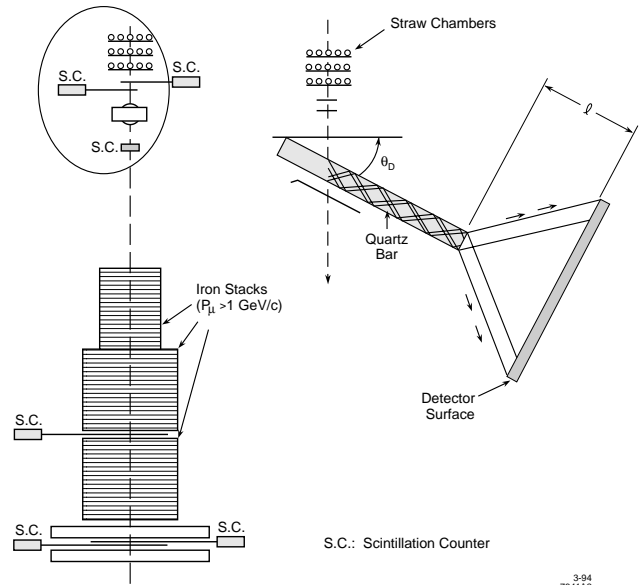


Fig. 2 The DIRC conceptual prototype. The photon detector was a single PMT at the bar end or an array of PMTs at the detector surface.

simulation and performance estimates for the DIRC in BABAR. Its main goal besides proving the feasibility of the DIRC concept was to measure the photon yield and single Cherenkov photon angle resolution.

The setup, shown in Figure 2, contained 120 cm and 240 cm long quartz bars (manufactured by Zygo Corp. [6] from Vitreosil F/055 fused quartz material [7]), 4.73 cm wide and 1.70 cm thick. The 240 cm long bar was made from two 120 cm long bars glued together with an epoxy (epo-tek 301-2 [8]) which has good transmission at wavelengths to which the PMTs are sensitive. The quartz bars were placed in a light-tight box and supported by nylon screws. The box was mounted on rotating rails to allow angle and position variation. The cosmic muon trigger was provided by scintillation counters, and a 1 GeV/c threshold was provided by an iron stack underneath the bar. An array of straw chambers was used to measure the track direction for the single Cherenkov photon angle resolution measurement.

To measure the photoelectron yield, a single 2" diameter PMT (Burle-8850 [9]) was glued directly to the end of the 120 cm long bar. Figure 3 shows the observed average number of photoelectrons as a function of track dip angle. The number of photoelectrons can be written using the “Cherenkov quality factor” N_0 as

$$N_{pe} = \epsilon_{coll} \frac{d}{\cos\theta_D} N_0 \sin^2\theta_C, \quad (1)$$

where ϵ_{coll} is the photon collection efficiency, θ_C is the Cherenkov angle, d is the thickness of the radiator bar, and θ_D is the dip angle of the track. The collection efficiency ϵ_{coll} is a function of dip angle, track position, and photon energy. The N_0 is given by

$$N_0 = \frac{\alpha}{\hbar c} \int \epsilon_{PMT} dE, \quad (2)$$

where ϵ_{PMT} is the quantum efficiency of the PMT and E is

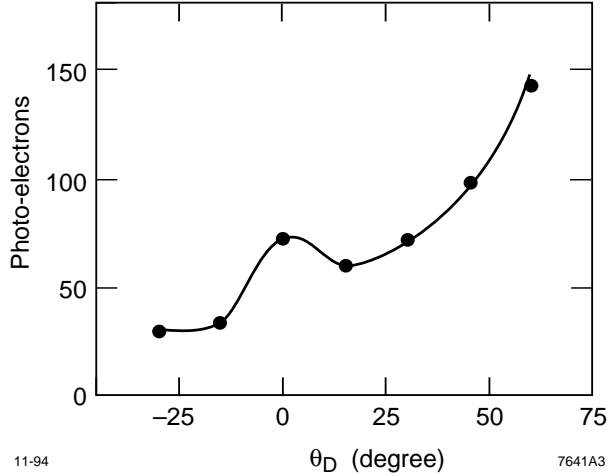


Fig. 3 The observed photoelectron yield from a 1.7 cm thick bar at a track position $z = 60$ cm as a function of dip angle θ_D . The solid line is a Monte Carlo simulation. The statistical errors of the measurements are smaller than the circles. There is a scale error of 3% due to calibration uncertainty.

the photon energy. From the quantum efficiency curve claimed by the manufacturer, we find $N_0 \sim 150 \text{ cm}^{-1}$. The solid line is a Monte Carlo simulation of the test setup. It simulates the propagation of the photons through the bar, taking into account the wavelength dependencies of both the photon absorption in the quartz bar and the quantum efficiency of the PMT. The Monte Carlo simulation reproduces both the dip angle dependence and absolute yield well. The number of photoelectrons increases in the forward direction, mainly as a result of the larger amount of quartz traversed by the particles. The bump at $\theta_D = 0^\circ$ is due to the fact that all of the photons are internally reflected at this angle.

To measure the angular resolution, a closely packed array of 47 $1\frac{1}{8}$ " diameter PMTs (EMI-9124A [10]) was used. The standoff region (Standoff Box) material was air to allow easy movement of the array. The single Cherenkov photon angle resolution was measured with the PMT array at various standoff distances ℓ , dip angles θ_D , and track positions z . The results of the measurements are summarized in Table 1. The quoted values for the resolution are from a fit of a Gaussian plus polynomial to the Cherenkov photon angle distribution. The measured single photon resolution is found to be consistent with the estimate based on the Monte Carlo simulations and no significant dependence on the track position is seen.

In other tests, the Cherenkov photon attenuation rate along the bar was found to be $\sim 10\%/m$ for the track dip angle $\theta_D = 30^\circ$ and no significant light loss or resolution loss at the glue joint in the 240 cm long bar was seen.

In conclusion, all measurements were consistent with each other and with the Monte Carlo simulation and estimates. They demonstrated the particle identification capability of the DIRC, and showed that the main features of the device were well-understood and that the performance could be safely extrapolated to a full scale device.

θ_D	ℓ [cm]	z [cm]	resolution [mrad]	
			measurement	estimate
30°	60	60	10.1 ± 1.1	10.1
40°	60	60	11.7 ± 1.2	12.0
50°	60	60	14.0 ± 0.9	12.8
60°	60	60	12.6 ± 0.8	12.5
60°	90	30	8.6 ± 1.4	10.2
30°	90	30	8.5 ± 0.5	7.8
30°	90	110	7.5 ± 1.2	7.8
30°	90	205	8.5 ± 0.6	7.8

Table 1

Summary of the single Cherenkov photon resolution measurements. The measurement at $z = 205$ cm is for the 240 cm long bar. All others are for the 120 cm long bar.

B. Prototype II

After the completion of Prototype I, many issues remained to be resolved before a DIRC detector for BABAR could be designed. The full scale Prototype II [5] was constructed to address these concerns. The main goals were:

- to refine the early performance estimates;
- to explore the engineering issues associated with constructing a large DIRC detector;
- to gain experience in the long-term operation of a large DIRC detector;
- to provide a test-bench for new ideas as the design of the BABAR DIRC proceeded.

The construction of the prototype was completed in April 1995, and it was tested briefly in a hardened cosmic muon beam at LBNL. Shortly thereafter, the detector was shipped to CERN where it was installed in the T9 zone of the CERN PS East Hall. It was tested for a period of over 12 months in the T9 beam.

1) Setup

The Prototype II consisted of three major mechanical assemblies (see Figure 4), installed on a carriage which could translate and rotate Prototype II in several dimensions:

- Two 120 cm long quartz bars (manufactured by Zygo Corp. [6] from Vitreosil F/055 fused quartz material [7]), inside a protective box. The bars were placed in the box either side-by-side or glued together as one 240 cm long bar. The bars were coupled to the Standoff Box through a small quartz entrance window.
- A standoff box filled with pure water, with its mechanical support. This assembly included a small quartz window interface where Cherenkov light from the bar entered the Standoff Box, and nine large quartz windows in a 3×3 array, which allowed the light to pass through to the PMTs after image expansion. The bottom of the

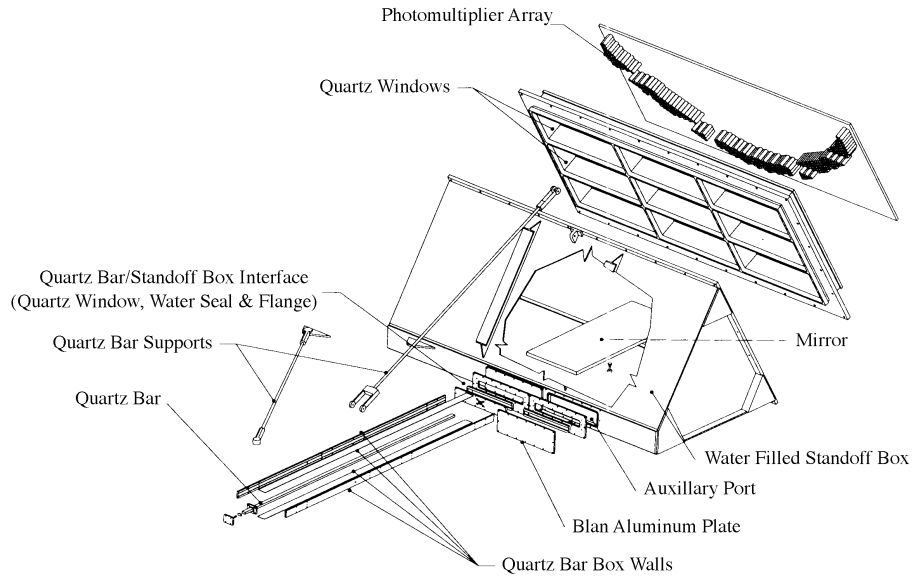


Fig. 4 Isometric drawing of the DIRC full scale prototype.

Standoff Box held a plane glass mirror with front-surface aluminum and dielectric coatings [11]. This mirror is used to reflect the lower Cherenkov ring image onto the upper one, reducing the number of PMTs needed by 50%.

- An array of PMTs (Hamamatsu model R268 [12]). These were optically and mechanically coupled to the Standoff Box exit windows through a thin UV-clear silicone rubber sheet. For economic reasons, instead of instrumenting the full image plane, only a limited number of PMTs were installed that covered the Cherenkov ring associated with a single particle incident angle.

The T9 beam line setup is shown in Figure 5. The beam provided unseparated secondary particles in a narrow momentum range tunable between 0.8 and 10 GeV/c. It was operated with positive particles (mainly protons, pions, and positrons) at low intensity, delivering around 10^4 particles to the test area per spill. For particle identification, the beam line was equipped with two gas threshold Cherenkov counters and a time-of-flight system (TOF). To measure the angle and position of particles incident on the quartz bar, three multi-wire proportional chambers (MWPC) were installed on the beam line. The trigger was generated as the coincidence of signals from several plastic scintillation counters (PSC). A beam halo veto counter made of scintillation counters was installed on the beam line close to the beam extraction. A large scintillation counter was also fixed on the Standoff Box to flag particles crossing the water tank. Another set of counters was arranged along the quartz bar outside the region populated by trigger particles. These counters were used offline to tag events with associated beam halo particles.

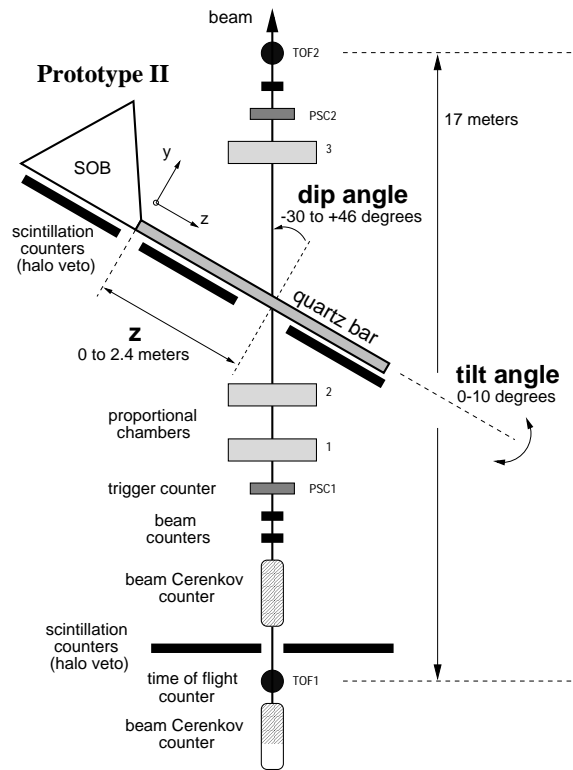


Fig. 5 Top view (not to scale) of the T9 beam line at the CERN PS during the Prototype II tests.

2) Results

The single photon θ_C resolution of Prototype II is demonstrated in Figure 6. This shows the distribution of corrected average hit rate versus reconstructed θ_C for a subset of PMTs for pions at 5.4 GeV/c, $\theta_D = -20^\circ$, and

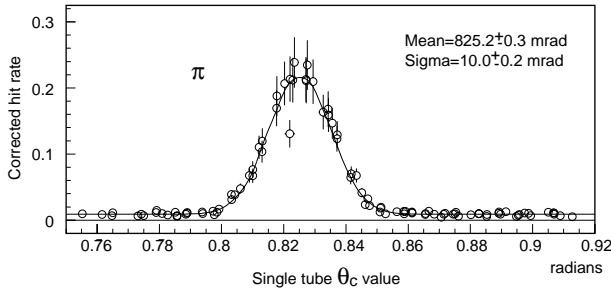


Fig. 6 Cherenkov angle (θ_C) distribution of the hit rate for pions, fit to a Gaussian signal plus flat background. The fit result agrees well with the expected mean signal value of $\theta_C = 825.2$ mrad for pions at 5.4 GeV/ c momentum.

$Z = 220$ cm. The data fit well to a Gaussian for the Cherenkov signal plus a flat distribution for the background. The θ_C resolution was defined as the Gaussian σ parameter of this fit. The single photon θ_C resolution for pions was found to be 10.0 ± 0.2 mrad, in agreement with Monte Carlo simulations and consistent with the expectation based on the value obtained for an air standoff region in Prototype I. Similar analysis of protons and electrons gave consistent results. No significant variation in this resolution with either Z (photon transmission distance down the bar) or ϕ_C (photon position within the Cherenkov ring) was observed, within the calculated errors of the data.

The particle identification power of Prototype II was studied by measuring the average Cherenkov angle per track for pions and protons at 5.4 GeV/ c . At that momentum, the θ_C separation between pion and proton Cherenkov rings has the same value as between pions and kaons at 2.8 GeV/ c . The momentum 2.8 GeV/ c corresponds roughly to that of decay products from a two-body B^0 decay in BABAR hitting the DIRC bar at the same 20° value of θ_D . In this decay mode, pion/kaon separation is essential for the physics goal of the BABAR experiment. Thus, even though the BABAR DIRC detector differs in detail from the Prototype II detector, the pion/proton separation at 5.4 GeV/ c tests the performance of Prototype II in a situation relevant for the BABAR DIRC.

The particle separation power was defined as the difference in the θ_C peak position values, divided by the root mean squared of the pion track θ_C distribution. This is shown in Figure 7. The pion track θ_C root mean squared was measured for data at $Z = 220$ cm, and found to be 3.6 mrad. The peak separation was measured in the same data to be 13 mrad, consistent with expectations. These together give a pion/proton PID power for Prototype II of 3.6 standard deviations.

The track Cherenkov angle resolution was observed to scale approximately as the square root of the number of photons, with a small residual term of about 1.1 mrad coming from correlated factors such as track multiple scattering in the bar, and residual alignment uncertainties.

The photoelectron yield of Prototype II was measured with a coarse Z scan of the 240 cm long bar with Z steps of 20 cm over the full Z range (20 cm to 460 cm) at constant

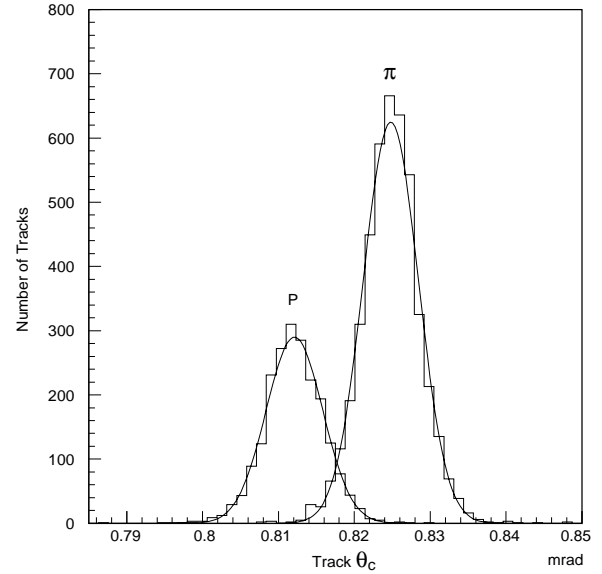


Fig. 7 Cherenkov angle per track for pions and protons at 5.4 GeV/ c , with $Z = 220$ cm.

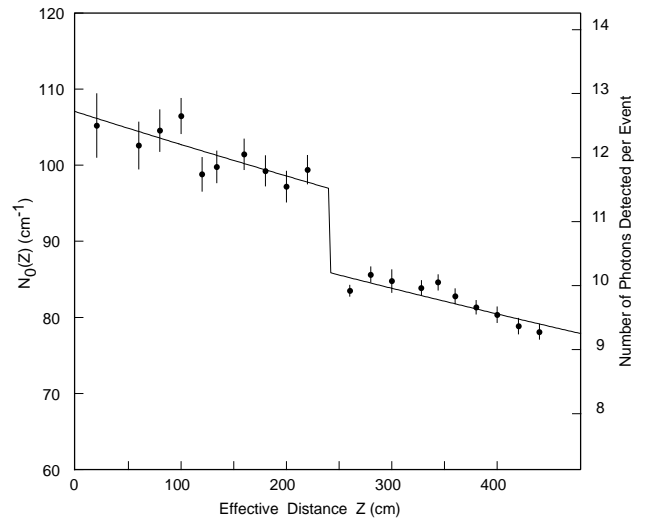


Fig. 8 N_0 as a function of the effective bar transmission distance Z for the coarse Z scan at $\theta_D = \pm 20^\circ$ and 5.4 GeV/ c momentum. Pion and proton samples are averaged in the data points shown. The discontinuity at $Z = 240$ cm accounts for the end mirror reflectivity. A possible loss at the glue joint (for $Z = 120$ cm and $Z = 360$ cm) was not included in this fit. The scale at the right indicates the average number of signal photons extracted from a ring fit in the range $|\phi_C| < 1.0$ rad.

momentum (5.4 GeV/ c) and particle incident angle ($\pm 20^\circ$). This analysis also allows the determination of the attenuation rate for Cherenkov photons as they traveled down the bar. The Cherenkov quality factor N_0 is defined by the relation $\epsilon_{geom} \times N_0 \times \sin^2 \theta_C =$ the number of photoelectrons detected per centimeter of radiator over the acceptance of Prototype II. This definition of N_0 differs slightly from the one conventionally used with threshold Cherenkov detectors [13] in that the geometric acceptance ϵ_{geom} , which accounts for the

truncation of the Cherenkov cone and for the partial coverage of the image plane by PMTs, has been explicitly extracted. In this definition, N_0 is proportional to the product of the photodetection efficiency and the collection efficiency ϵ_{coll} , which accounts for the light losses during photon transmission and reflection. For the DIRC, N_0 is a function of Z .

Figure 8 shows the measurements of $N_0(Z)$ versus Z . The data are fit to an exponential with a discontinuity at $Z = 240$ cm, to account for reflection loss at the bar-end mirror. The fit gives a χ^2 of 24 for 18 degrees of freedom, and the fitted values for the three parameters are

$$\begin{aligned} N_0(0) &= 106.9 \pm 1.3 \text{ cm}^{-1} \\ \text{attenuation per meter} &= 4.1 \pm 0.7\% \\ \text{loss at the mirror} &= 11.4 \pm 1.5\% \end{aligned}$$

The errors quoted above are those returned from the fit, and so include the full statistical and systematic error on the photon rates, but not any systematic error due to the fit model itself. In this fit the potential loss of light at the glue joint at $Z = 120$ cm (and $Z = 360$ cm) is ignored. Fits with this loss as a free parameter were also performed. The glue joint light loss could not be measured precisely and was found to be consistent with zero within two standard deviations. Lab measurements and other tests also indicate a negligible light loss at the glue joint. Neglecting the glue joint loss leads to a conservative (larger) estimate of the attenuation, and has no effect on the estimate of $N_0(0)$. To facilitate comparing this $N_0(0)$ measurement with other N_0 measurements, the effects peculiar to the Prototype II test setup implicit in ϵ_{coll} must be removed. There is no way to measure ϵ_{coll} directly from the data. However, a realistic estimate of ϵ_{coll} at $Z = 0$ can be calculated by combining expected light-loss effects from the different parts of Prototype II, resulting in the estimate $\epsilon_{coll} \simeq 73\%$ at $Z = 0$, which leads to:

$$N_0(0)/\epsilon_{coll} = 146 \pm 1.8 \pm 9 \text{ cm}^{-1}$$

The first error comes from the N_0 fit error, the second from an estimated 30% uncertainty in the light loss estimates. This value is in agreement with the value of 137 cm^{-1} that was used for performance estimates of the BABAR DIRC in the BABAR TDR [2] and the Prototype I result of 150 cm^{-1} .

This measurement of the attenuation value agrees well with a full Monte Carlo simulation, which includes the spectral response of the PMTs, the spectral transmission of bulk fused quartz, and benchtop measurements [14, 15]. It is considerably lower than the value of 10% observed in Prototype I. The difference can be understood as the result of surface contamination. Careful cleaning of the bar surfaces was shown to reduce the attenuation from 10% to about 4%.

Other results included:

- Scans across the gap region between bars in the side-by-side operation of two 120 cm long bars showed that there is no measurable cross talk between bars mounted in close proximity side-by-side.
- The effective index of refraction of the quartz radiator was measured to be $n_q = 1.474$ from a direct fit to the momentum dependent Cherenkov angle.

- One of the large quartz windows that coupled the SOB to the PMT array was replaced with a jig which held the PMTs directly in the water. The operation of the photomultiplier tubes in water was completely satisfactory.
- The BABAR DIRC proposal to equip each PMT with light concentrators was tested by equipping one of the PMT bundles temporarily with a set of reflective cones. Each cone was 8 mm tall with an outer diameter of 31 mm equal to the PMT spacing, and an inner diameter of 25 mm equal to the photocathode diameter. To facilitate their mounting, ten cones were manufactured together in a single plaque of molded plastic. The cone plaques were polished and coated with a 600 nm Al layer followed by 200 nm of SiO_2 . The light collection improvement using the concentrators measured in the Prototype II test was consistent with lab measurements.
- Finally, the relationship between timing and photon position at the detector was shown to be very useful for background rejection. The single photon timing resolution was measured to be 2.4 ns and was dominated, as expected, by the transit time spread of the PMTs used in the test. The BABAR DIRC will use PMTs with a 1.8 ns transit time spread (ETL model 9125 [10]).

In conclusion, the operation of Prototype II was stable and robust over a period of 12 months in the T9 beam. The tests were very successful and no significant, unanticipated variance in performance as a function of the position or angle of the track in the DIRC bar was observed.

IV. THE DIRC FOR BABAR

Prototype I and Prototype II have shown that the DIRC is well-matched to the asymmetric B Factory and motivate the choice of the DIRC as the primary PID system for BABAR. Simulations based on the prototype performance predict an excellent π/K separation of the BABAR DIRC.

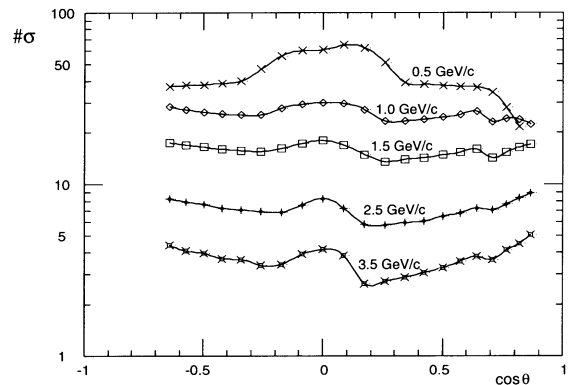


Fig. 9 Predicted π/K separation performance of the DIRC, quoted in terms of the number of standard deviations, vs. $\cos\theta$, for different momenta.

This is demonstrated in Figure 9 where the predicted PID performance is shown as a function of the particle momentum and the polar angle $\cos \theta$. The separation is nearly four standard deviations or better over the entire acceptance region.

The DIRC for BABAR will be a barrel detector, located in radius between the drift chamber and the CsI calorimeter. The main components are shown schematically in Figure 10.

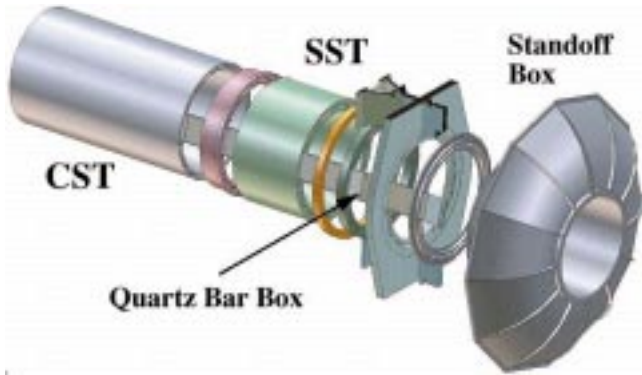


Fig. 10 Schematic of the DIRC detector assembly.

The mechanical support of the DIRC is cantilevered from the iron endcap region, supported by a thick steel tube (SST) which also helps to minimize the magnetic flux gap caused by the DIRC extending through the instrumented flux return. The quartz radiator bars will be supported in the active region by a thin extension of this tube. This central support tube (CST) is designed similar to an aircraft wing, made of thin aluminum inner and outer shells covering an aluminum frame. The frame will be made of thin-wall bulkhead rings spaced every 60 cm along the tube axis. The space between the bulkheads will be filled by construction foam. There will be no DIRC mechanical supports in the forward end of BABAR, minimizing its impact on the other detector systems located there. The standoff box will be made of stainless steel and hold about 6000 liters of pure water. The BABAR DIRC will use almost 11 000 2.82 cm diameter PMTs (ETL model 9125 [10]). These tubes have high gain and good quantum efficiency (around 25%) in the Cherenkov wavelengths transmitted by both quartz and water, and are available at modest price. They will be arranged in a nearly close-packed hexagonal pattern on the detection surface. Hexagonal light concentrators on the front of the PMTs will result in an effective active surface area fraction of approximately 90%. The PMTs will lie on a surface that is approximately toroidal. The distance traversed in the water by the photons emerging from the bar end will be 1.17 m. This distance, together with the size of the bars and PMTs, gives a geometric contribution to the single photon Cherenkov angle resolution of 7 mrad. This geometric contribution is approximately equal to the resolution contribution coming from the production and transmission dispersions.

The total thickness of the DIRC, including support structures, will be about 8 cm or 19% of a radiation length for a particle at normal incidence. The DIRC bars will be arranged as a 12-sided polygonal barrel. Each side of the polygon will

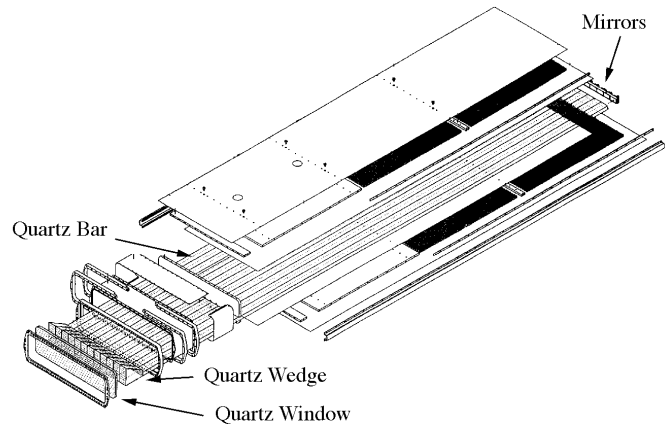


Fig. 11 Schematic of the DIRC bar box assembly.

consist of 12 bars placed very close together ($75 \mu\text{m}$ gap) side by side, in 12 quartz bar boxes, shown in Figure 11, for a total of 144 bars. The radiator bars will cover 94% of the azimuthal angle and 87% of the center-of-mass polar angle. The bars will have transverse dimensions of 1.7 cm thick by 3.5 cm wide, and are about 4.90 m long. The length is achieved by gluing end-to-end four 1.225 m bars, that size being the longest high quality quartz bar currently available from industry.

In order to preserve the photon angles during surface reflections, the faces and sides have to be nominally parallel while the orthogonal surfaces are kept nominally perpendicular. Typically, the bar's surfaces have to be flat and parallel to about $25 \mu\text{m}$, while the orthogonal surfaces are perpendicular to a tolerance of 0.3 mrad. The most difficult requirements are associated with maintaining the photon transmission during reflections at the surfaces of the bar (a Cherenkov photon may be internally reflected a few hundred times before exiting the bar). This leads to rather severe requirements on edge sharpness and surface finish. After polishing, the DIRC radiator bars have an average edge radius less than $5 \mu\text{m}$, and a nominal surface polish of better than 0.5 nm (RMS). The bars will be manufactured by Boeing [16]. The raw material for the DIRC radiator bars will be synthetic fused silica. This follows benchtop measurements [14, 17] that had shown that all fused quartz candidate materials, including the one used in the prototypes, were not sufficiently radiation hard to be used in the BABAR DIRC. Furthermore, those tests revealed that a periodicity in the refractive index of the quartz bulk material, a by-product of the proprietary production process, causes interference effects in some synthetic quartz materials [18]. This interference would severely decrease the angular resolution of the DIRC. A candidate material that does not show the periodicity was identified (Spectrosil [7]) and will be used in the DIRC.

The mirror in the Standoff Box described in the section on the Prototype II setup, has been replaced in the BABAR DIRC design by a quartz "wedge" which is glued to the readout end of each bar. The wedge is a 9 cm long block of synthetic

fused silica with the same width as the bars (3.5 cm), and a trapezoidal profile (2.8 cm high at the bar end and 8 cm high at the quartz window, which provides the interface to the water). Total internal reflection on all sides of the quartz wedge provides nearly lossless reflection, thereby increasing the number of detectable photons relative to the Prototype II mirror design. The wedge design also slightly improves the angular resolution, allows a stronger and more robust water seal, and eliminates the need for operating the fragile mirrors in the standoff box water and their post-installation alignment.

V. CONCLUSIONS

The DIRC is a new type of ring imaging Cherenkov detector that is well-matched to the requirements for a particle identification device in the BaBar detector at the PEP-II B Factory. It is thin, fast, and tolerant of background. The prototype program has demonstrated that the principles of operation are well-understood, and that the final system is expected to yield excellent π/K separation of nearly four standard deviations or better over the full kinematic region for all of the products from B decays. The construction of the DIRC is well underway. The detector will be installed in BABAR by September 1998. This will be followed by a cosmic ray checkout and data taking is scheduled to begin in April 1999.

VI. ACKNOWLEDGMENTS

This research is supported by the Department of Energy under contracts DE-AC03-76SF00515 (SLAC), DE-AC03-76SF00098 (LBNL), DE-AM03-76SF0010 (UCSB), and DE-FG03-93ER40788 (CSU); the National Science Foundation grants PHY-95-10439 (Rutgers) and PHY-95-11999 (Cincinnati). The speaker would like to thank the Alexander-von-Humboldt Stiftung for their financial support.

VII. REFERENCES

- [1] "An Asymmetric B Factory Based on PEP: Conceptual Design Report," *LBL-PUB-5303/SLAC-REP-372 (1991)*.
- [2] The BABAR Collaboration, "BABAR Technical Design Report," *SLAC-REP-950457, 1995*.
- [3] B.N. Ratcliff, "The B Factory Detector for PEP-II: a Status Report," SLAC-PUB-5946 (1992) and Dallas HEP (1992) 1889; B.N. Ratcliff, "The DIRC Counter: a New Type of Particle Identification Device for B Factories," SLAC-PUB-6047 (1993); P. Coyle et.al., "The DIRC Counter: A New Type of Particle Identification Device for B Factories," *Nucl. Instr. Methods A 343 1994* pp. 292.
- [4] D. Aston et.al., "Test of a Conceptual Prototype of the Total Internal Reflection Cherenkov Imaging Detector (DIRC) with Cosmic Muons," *IEEE Trans. Nucl. Sci.* 42 (1995) 534.
- [5] H. Staengle et.al., "Test of a Large Scale Prototype of the DIRC, a Cherenkov Imaging Detector based on Total Internal Reflection for BABAR at PEP-II," *Nucl. Instr. Methods A 397 (1997)* 261.

- [6] Zygo Corporation, Laurel Brook Road, Middlefield, Connecticut 06455.
- [7] Quartz Products Co., 1600 W. Lee St., Louisville, Kentucky 40201.
- [8] Epoxy Technology, Inc., 14 Fortune Dr., Billerica, Massachusetts 01821.
- [9] Burle Industries, Inc., 1000 New Holland Ave., Lancaster, Pennsylvania 17601.
- [10] Electron Tubes Limited (formerly: Thorn EMI Electron Tubes), Bury Street, Ruislip, Middlesex HA47TA, U.K.
- [11] Optical Coating Laboratory Inc. (OCLI) 2789 Northpoint Pkwy, Santa Rosa, California 95407.
- [12] Hamamatsu Co., 250 Wood Ave, Middlesex, New Jersey 08846.
- [13] Particle Data Group, "Review of Particle Physics," *Physical Review D 54, Part 1 (1996)*.
- [14] H. Krueger, M. Schneider, R. Reif, J. Va'vra, "Initial Measurements of Quartz Transmission, Internal Reflection Coefficient and the Radiation Damage," *Internal DIRC Note #18, January 1996*.
- [15] H. Krueger, R. Reif, X. Sarazin, J. Schwiening, J. Va'vra, "Measuring the Optical Quality of Quartz Bars and the Coupling of RTV to the Window," *Internal DIRC Note #40, May 1996*; H. Krueger, R. Reif, X. Sarazin, J. Schwiening and J. Va'vra, "The Optical Scanning System for the Quartz Bar Quality Control," *Internal DIRC Note #54, October 1996*.
- [16] Boeing, 2511 C Broadbent Parkway NE, Albuquerque, New Mexico 87107.
- [17] X. Sarazin, M. Schneider, J. Schwiening, R. Reif and J. Va'vra, "Radiation Damage of Synthetic Quartz and Optical Glues," *Internal DIRC Note #39, May 1996*.
- [18] M. Convery, B. Ratcliff, J. Schwiening and J. Va'vra, "Measurements of Periodic Structure in Synthetic Quartz," *Internal DIRC Note #87, September 1997*.